

Ostomy accessories are used together with your pouching system.

Accessories may help enhance the performance of your pouching system, solve a problem or help improve the quality of your life.



Your Guide to Adapt™ Accessories



If you want help to minimise leakage and create a custom fit...

Adapt CeraRings™

Product name	Hollister Code	Size	SAS Issue	Product Info
Adapt CeraRing Flat Rings	8805 8815	Standard Slim	3 boxes per month (10 per box)	<ul style="list-style-type: none">• Infused with ceramide to help protect your skin• Alcohol free• No sting• Easily stretched, moulded or stacked
Adapt CeraRing Round Convex Rings	89520 89530 89540	20-25mm 30-35mm 40-45mm		
Adapt CeraRing Oval Convex Rings	89601 89602 89603	22×38mm 30×48mm 38×56mm		

- Fill dips and creases around your stoma, for a smooth surface to improve barrier fit
- Create the **added depth** you need around your stoma
- Create a **secure seal** to minimise leakage



Oval Convex Ring

Round Convex Ring

Flat Ring

Using Adapt CeraRing Barrier Rings

Option 1: Apply flat or convex barrier ring to the adhesive side of your skin barrier



Stretch and shape ring for your custom fit



Option 2: Apply flat or convex barrier ring to your skin, then apply your pouching system. Make sure the ring fits where the skin and stoma meet.



Stack for an improved fit



Adapt Skin Barrier Paste

Hollister Code	SAS Issue	Product Info
79300	3 tubes per month (57gm)	• Blend of hydrocolloids in a paste formulation

Fill any uneven surface to help improve your barrier fit, minimise leakage risk and protect skin.

14gm free sample tube
(Not on SAS)

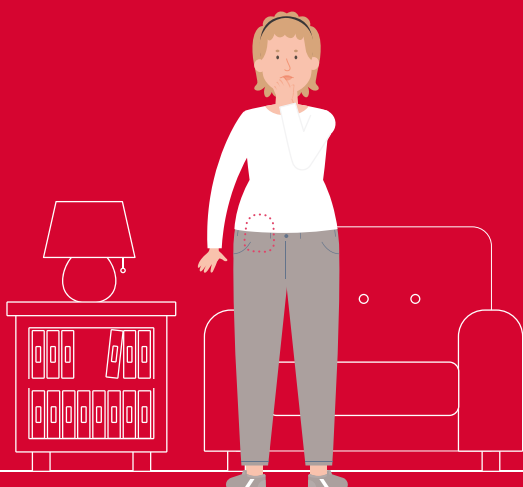
57gm Tube

Using Adapt Paste

1. Remove liner on skin barrier and apply a small bead of Adapt paste at the inner edge of the skin barrier – next to the opening where the stoma will be. You may allow it to set while you remove your used pouch.
2. Wash and dry your skin thoroughly.
3. Apply additional Adapt paste to uneven areas near the stoma if needed.
4. Apply your ostomy skin barrier as usual.



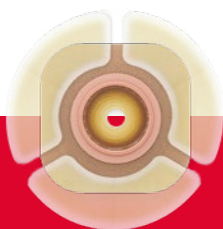
SAS Issue =
The amount of
product you are
able to order
through the
Stoma Appliance
Scheme.



If you want to enhance your pouch security...

Adapt Barrier Extenders

Hollister Code	SAS Issue	Product Info
79402	2 boxes per month (30 per box)	<ul style="list-style-type: none">• Customise usage with 3 separate sections• Hydrocolloid material



Enhance the feeling of pouch security by adding a frame to your skin barrier, also helping to extend pouch wear time.



Increase the feeling of security when undertaking **physical activity**



Suitable for use in **warm climates** to reduce barrier edge lifting

Using Adapt Barrier Extenders

1. Remove existing skin barrier and clean the skin around the stoma. Apply new skin barrier.
2. Remove paper backing by stretching lightly at each end of the extender.
3. Release only one side of the paper backing.
4. Place the adhesive end of the barrier extender along the perimeter of the skin barrier; covering both skin barrier and the skin next to it. Remove remaining paper backing.
5. Repeat for any additional strips you require around your barrier.
6. Barrier extenders will remove easily with your routine pouch change.



If you want help to care for and protect your skin...

Adapt Stoma Powder

Hollister Code	SAS Issue	Product Info
7906	2 bottles per month	<ul style="list-style-type: none">Blend of hydrocolloids in a powder mixture

- Absorb excess moisture from skin around your stoma
- Help protect and heal raw and weeping skin

Using Adapt Stoma Powder

- Wash and dry skin.
- Apply a small amount of powder to the irritated open skin area.
Reapply if needed to coat the irritated area.
- Gently brush away excess powder using your hand or a soft tissue.
Powder should stick to raw area and not be left on dry intact skin.
- Apply your pouching system as usual.
- Once the skin irritation has resolved, discontinue use.



Adapt No-Sting Protective Wipes

Hollister Code	SAS Issue	Product Info
7917	14 boxes per year (50 sachets per box)	<ul style="list-style-type: none">No sting

Provide a protective film on the skin to help prevent skin stripping from frequent barrier removal and ostomy output.

Using Adapt No-Sting Skin Protective Wipes

- Wash and dry skin.
- Apply wipe directly to skin area to be protected.
- Wait until the area is completely dry.
- Apply your pouching system as usual.



Using protective wipes under a ceramide-infused barrier may not be needed.

Ask Customer Care
if these are right for you.

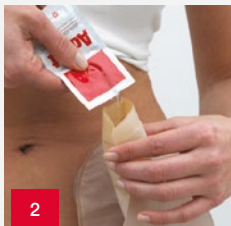
If you want to help eliminate odour and make emptying your pouch easier...

Adapt Lubricating Deodorant

Hollister Code	SAS Issue	Product Info
78500 (Bottle)	1 bottle per month	• All in one solution; lubricant and deodorant in same bottle
78501 (Sachets)	2 sachet boxes per year (50 sachets per box)	

Using for Drainable Pouches

1. Apply pouch.
2. Bottle: add approximately 5ml or 1 tsp (Figure 1).
Sachet: add the complete contents of the packet (Figure 2).
Close the pouch in the normal manner.
3. Rub to thoroughly coat the inside of the pouch (Figure 3).
Repeat Steps 1 or 2 after every emptying.



Using for Closed Pouches

1. Do not remove release paper on barrier to add product.
2. Bottle: add approximately 5ml or 1 tsp (Figure 4).
Sachet: add the complete contents of the packet.
3. Apply your pouch. Rub to thoroughly coat the inside of the pouch (Figure 3).

Neutralise
odour

Lubricate inside of the pouch to limit pancaking and for easy emptying.



If you want help removing your pouch whilst being gentle on skin...

Adapt Remover Wipes and Spray

Product name	Hollister Code	SAS Issue	Product Info
Adapt No-Sting Adhesive Remover Wipes	7760	14 boxes per year (50 sachets per box)	<ul style="list-style-type: none">• Alcohol free• No sting
Adapt Medical Adhesive Remover Spray	7737	2 spray cans per month	

Using Adhesive Remover Spray

1. Shake well before using.
2. Peel back one edge of skin barrier.
3. Hold can so arrow faces the base of the skin barrier, and spray until the adhesive releases.
4. Ensure your skin is dry and apply new pouching system as usual.



Spray
Spray until the skin barrier releases.

Using Universal Remover Wipes

1. Press or rub wipe against your skin as you peel off your skin barrier and/or tape.
2. Press or rub wipe over any areas of the skin where tape residue remains.
3. Ensure your skin is dry and apply new ostomy pouching system as usual.



Wipes
Rub the wipe over skin as you peel off skin barrier.



Wipes
Clean off remaining tape residue.

- Gently remove adhesive products and residue to make removal of skin barriers fast and easy
- Help reduce potential for skin stripping



For your free accessory
samples and further support,
contact Customer Care.

1800 880 851

Complete Care Tips on how to
use each accessory can be found on
www.hollister.com.au

Your Stomal Therapy Nurse is able
to help guide you if you are unsure on
which accessories are right for you.

Prior to use, be sure to read the instructions for use for information regarding Intended Use, Contraindications, Warnings, Precautions, and Instructions for Use. The Hollister logo, Adapt and "Healthy skin. Positive outcomes." are trademarks of Hollister Incorporated. Not all products are CE marked.

© 2020 Hollister Incorporated. AUH278. November 2020.



Ostomy Care
Healthy skin. Positive outcomes.