

Adapt CeraRing™ barrier rings – flat

Adapt CeraRing barrier rings are infused with ceramide. Ceramides help protect the skin's natural moisture barrier to help prevent water loss that may lead to damage and dryness. It is designed to help support healthy skin and provide a custom fit to help prevent leakage and peristomal skin complications.



General Information

- Use to fill in or caulk uneven skin contours near the stoma to create a flatter surface
- Use to help prevent ostomy drainage from getting under the pouch seal
- Can be cut, stretched, or stacked together to improve the fit of your pouching system
- Outer diameter of 48mm with size options of 2.3mm or 4.5mm thickness are available for your convenience

Using Adapt Barrier Rings

1. Wash and dry your skin thoroughly
2. Remove the barrier ring from the plastic tray (Figure 1), then remove the protective coverings from both sides of the barrier ring (Figure 2).
3. Stretch and shape before applying (Figure 3). You may choose to:
 - a. Apply the barrier ring to the adhesive side of your skin barrier (Figure 4) or
 - b. Apply the barrier ring to your skin and then apply your pouching system (Figure 5)
4. Stack barrier rings if needed, for an improved fit (Figure 6).
5. To remove, gently peel away from the skin when you change your pouching system.



Figure 1
Remove from plastic tray



Figure 2
Remove both release liners



Figure 3
Stretch for an improved fit

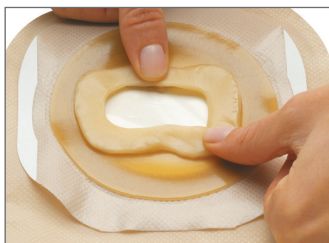


Figure 4
Shape ring for custom fit

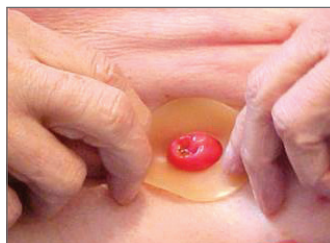


Figure 5
Apply ring to skin, making sure it fits where the skin and stoma meet



Figure 6
Stack for an improved fit

Adapt CeraRing™ barrier rings – flat

Frequently Asked Questions

Q: Why would I choose to use a slim ring in 2.3mm thickness?

A: A slim barrier ring is designed to be stretched and shaped like the standard version but offers a low profile.

Q: Is there a top or bottom to the barrier ring?

A: No, either side may be applied to your skin.

Q: My stoma is not round. Can I still use the barrier rings?

A: Yes, Adapt barrier rings can be easily stretched and shaped for a customised fit.

Q: I used to use paste. Are the barrier rings better than paste?

A: There are many advantages to using Adapt barrier rings instead of paste. For some people, barrier rings are easier to apply and remove than paste. Barrier rings are more durable and tend to be more resistant to erosion from your ostomy discharge. Most people find that the barrier rings eliminate the need for paste.

Q: Can I use this if my skin is irritated?

A: Yes*, Adapt barrier rings are alcohol-free, so there is no sting from alcohol when applied to broken or irritated skin.

**Irritated skin near the stoma should be evaluated by a Stomal Therapy Nurse, who will help determine the cause of the skin problem and how to prevent further injury.*

Outer Diameter	Inner Diameter	Thickness	Code
48 mm	20 mm	4.5 mm	8805
48 mm	20 mm	2.3 mm	8815 Slim Fit

Adapt barrier ring - 98mm for a wider fit all around

Flat, circular-shaped **hydrocolloid** skin barriers with a centre opening. Fill uneven skin surfaces around the stoma. Easily shaped to the dimensions of the stoma.



Outer Diameter	Code
Flat Large 98mm	7806*

* Note: Not infused with Ceramide

Additional Instructions:

For product questions or sampling needs call:

Australia 1800 880 851

New Zealand 0800 678 669

Routine follow-up with your Stomal Therapy Nurse is recommended.

Prior to use, be sure to read the Instructions for Use for information regarding Intended Use, Contraindications, Warnings, Precautions, and Instructions.

The Hollister logo, Adapt, Adapt CeraRing and "Healthy skin. Positive outcomes." are trademarks of Hollister Incorporated. Not all products are CE marked.

© 2020 Hollister Incorporated. AUH241. April 2020.

Australia
PO Box 375
Box Hill, VIC 3128
1800 880 851
www.hollister.com.au

New Zealand
PO Box 62-027
Mt Wellington, Auckland
0800 678 669
www.hollister.co.nz