

# Hollister Sterile Leg Bags Flip Tap

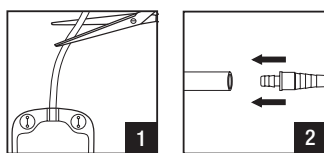
## Guide for Use

### Applying the bag

**Single patient use only.** Ensure these simple instructions are followed for maximum comfort and security.

Ensure the drain tap is closed.

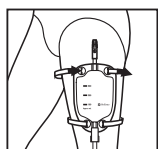
1. To shorten the inlet tubing of the leg bag (if desired) cut the tubing. Insert the connector into the tubing.
2. Remove cap from connector, if present, then attach to the sheath (catheter). Make sure tubing is not kinked or obstructed.



50cm inlet only

### Applying the leg bag straps

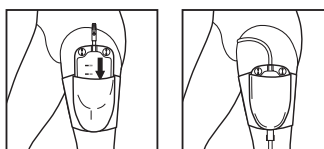
Adjust the straps so they are comfortable and secure.



### Precautions

- To ensure adequate circulation, do not overtighten.
- Check the area under the straps regularly for skin irritation or trauma.
- To prevent improper drainage do not attach leg bag to knee.

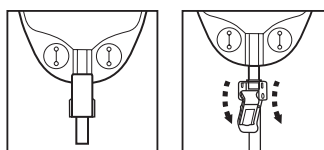
### Holster fixation (holster not included)



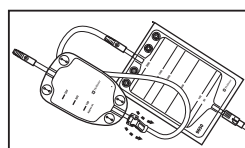
### Draining leg bag

Tap closed

Tap open



### Connecting to a night drainage bag (not included) for extra capacity



### To remove and dispose

(Please follow all local disposal regulations)

Remove leg bag straps.

### Warnings

- Disinfection and sterilisation may compromise the product. This may result in odour or leakage.

### Precautions

- ⌚ Single patient – multiple use. Sharing this product with multiple users creates a risk of infection.

Between uses, empty and rinse leg bag with lukewarm water or clean per healthcare professional recommendations. Hang to dry away from heat. Wipe outside of bag and tubing with damp cloth as needed. Clean the connector with an alcohol wipe before each use.

### Notes

Contact a healthcare professional for help with continence care products. In case of serious injury (incident) in relation to your use of the product, please contact your local distributor or manufacturer and your local competent authority. For more information, see [www.hollister.com/authority](http://www.hollister.com/authority) or contact your local distributor.

- Urinary leg bag with drain valve and attached tubing
- Urinary leg bag straps



- Stepped mount connectors



Hand wash



Drip dry



Do not iron



Do not bleach



Do not dry clean

Discard when visibly damaged or stained.



Not made with natural rubber latex

Prior to use, be sure to read the Instructions for Use for information regarding Intended Use, Contraindications, Warnings, Precautions and Instructions.

### Product Ordering Codes – Sterile

9621K – 500ml / 10cm inlet

9631K\* – 800ml / 10cm inlet

9624K – 500ml / 50cm inlet

9632K – 800ml / 50cm inlet

\*Not available in New Zealand

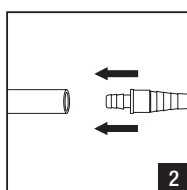
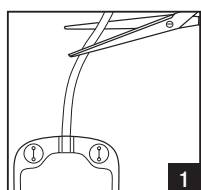
# Hollister Non-Sterile Leg Bags Flip Tap

## Guide for Use

### Applying the leg bag

Ensure the drain tap is closed.

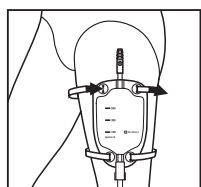
1. To shorten the inlet tubing of the leg bag (if desired) cut the tubing.
2. Insert the stepped mount connector if present then attach to the sheath (catheter). Make sure tubing is not kinked or obstructed.



50cm inlet only

### Applying the leg bag straps

Adjust the straps so they are comfortable and secure.

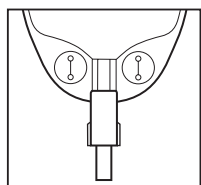


#### Precautions

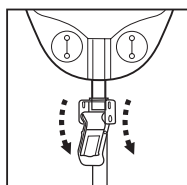
- To ensure adequate circulation, do not overtighten.
- Check the area under the straps regularly for skin irritation or trauma.
- To prevent improper drainage do not attach leg bag to knee.

### Draining leg bag

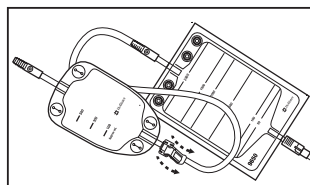
Tap closed



Tap open



### Connecting to a night drainage bag (not included) for extra capacity



### To remove and dispose

(Please follow all local disposal regulations)

Remove leg bag straps.

### Warnings

- Disinfection and sterilisation may compromise the product. This may result in odour or leakage.

### Precautions



Single patient – multiple use. Sharing this product with multiple users creates a risk of infection.

Between uses, empty and rinse leg bag with lukewarm water or clean per healthcare professional recommendations. Hang to dry away from heat. Wipe outside of bag and tubing with damp cloth as needed. Clean the connector with an alcohol wipe before each use.

### Notes

Contact a healthcare professional for help with continence care products. In case of serious injury (incident) in relation to your use of the product, please contact your local distributor or manufacturer and your local competent authority. For more information, see [www.hollister.com/authority](http://www.hollister.com/authority) or contact your local distributor.

- Urinary leg bag with drain valve and attached tubing
- Urinary leg bag straps



- Stepped mount connectors



Hand wash



Drip dry



Do not iron



Do not bleach



Do not dry clean

Discard when visibly damaged or stained.

Prior to use, be sure to read the Instructions for Use for information regarding Intended Use, Contraindications, Warnings, Precautions and Instructions.

### Product Ordering Codes – Non-Sterile

9652 – 500ml / 50cm inlet

9653 – 800ml / 50cm inlet

For more information  
or samples please call:

AU Customer Care **1800 880 851**  
[www.hollister.com.au](http://www.hollister.com.au)

NZ Customer Service **0800 678 669**  
[www.hollister.co.nz](http://www.hollister.co.nz)